



Product Overview
Premium Flat Roof Window

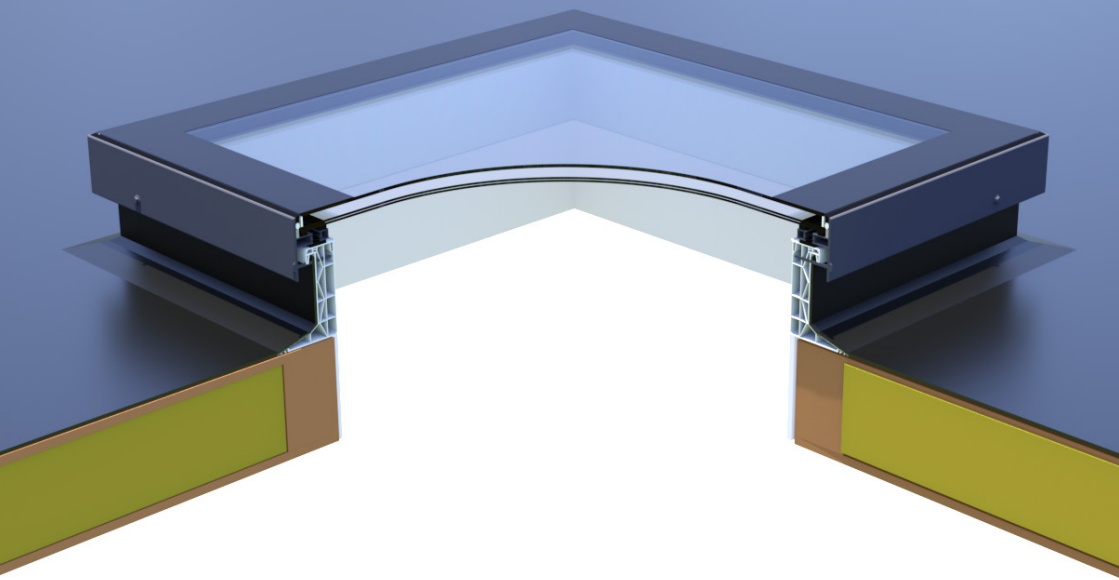
Offering a clean, minimalistic finish both inside and out, Skyseal Pro is the elegant go-to solution.

Highly energy efficient, its glass-to-edge design offers uninterrupted views and stunning, modern aesthetics.

Exceptional performance perfectly blended with contemporary styling; Skyseal Pro will undoubtedly add the finishing touch to your project.

Stocked in the popular anthracite grey in a wide range of sizes, ventilation options and a choice of upstands we can be sure to deliver on your requirements. In-house manufacturing allows us to make bespoke to any size – giving you endless design possibilities. And that's not where it ends...

Safety is paramount when dealing with glass rooflights – Skyseal Pro flat glass is CWCT tested to Class 1. With this rating you can rest assured that you've put safety first. Skyseal Pro also features a thermal break, providing excellent sound insulation and thermal properties.



10yr
WARRANTY

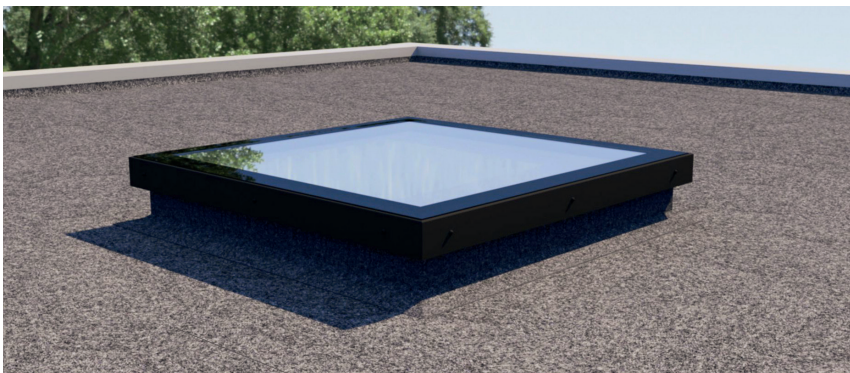
class 1
CWCT

laminated
INNER PANE

5★
RATED

Key Features & Benefits

- Flush glazed **glass-to-edge design**
- Non-fragility **CWCT Class 1 tested** as standard
- Electric opening with **concealed motors** – new
- Good **thermal and sound** insulation properties
- Factory pre-glazed for **easy installation**
- **Ventilation** options available
- **Secure**, welded glazing frame
- Compatible with builders and **uPVC upstands**
- **Thermally broken** frame
- Aluminium frame powder coated to **any RAL colour**
- em.glaze **EasyClean Coating** available
- 18 sizes available from stock available within 5 working days (3 new larger sizes available in 5-10 working days)
- **Bespoke units** available in **5-8 weeks**

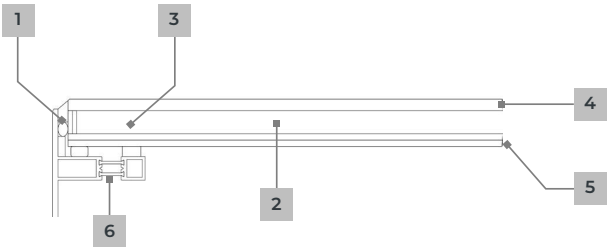
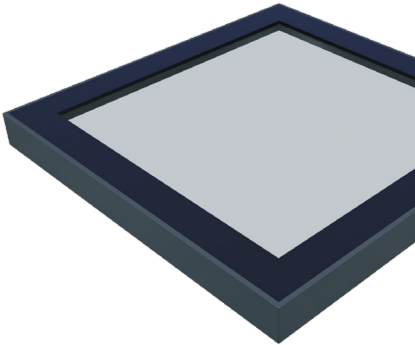


Colours & Glazing



RAL 7016 | Anthracite Grey

or powder coated to any standard RAL colour



1	Frame	Aluminium
2	Gas	Argon
3	Warm spacer	✓
4	Toughened outer pane	✓
5	Laminated inner pane	✓
6	Thermal break + box section	✓
Install pitch (upstand)		5–15° recommended
Standard frit width		84mm
External frame colour		RAL 7016 anthracite grey or any standard RAL colour
Ud-value – complete glass unit		1.23 W/m²K*
Non-fragility		CWCT TN66/67 Class 1
Airtight BS6375-1:2015 and BS EN 12207		Class 2 300 Pa
Wind loads BS 6375-1:2015 and BS EN 12210		Class A2

* as measured according to Building Regulations part L1B section 4.21, L2B section 4.26.

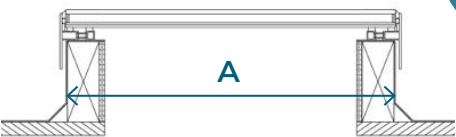
Sizes & Upstands

- Thermally broken upstands, incorporating fixing flange
- Installation options available to suit either a site-formed builder's upstand, or proprietary upstands with vertical or splayed sides
- Proprietary upstands are 150mm meeting the minimum requirements for building regulations (300mm splayed upstand also available on request)



Due to their size and/or weight, any products marked ! will require offloading by a mechanical means, i.e. a forklift. Please note the driver cannot offload these goods by hand. Vehicle mounted offloading facilities (HIAB) is available by prior arrangement at extra cost. Please call us should this be required. For special order items, this applies to any product above 1.5 square metres.

Builder's Upstand:



External curb size

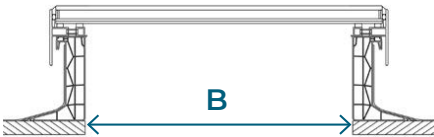
3 NEW
SIZES

		Glass unit only	Electric opening (concealed motor/s)
		To suit external curb size (mm) (A)	To suit external curb size (mm) (A)
Square	600 x 600		620 x 620
	700 x 700		720 x 720
	800 x 800		820 x 820
	900 x 900		920 x 920
	1000 x 1000		1020 x 1020
	1100 x 1100		1120 x 1120
	1300 x 1300		1320 x 1320
	1500 x 1500	⚠	1520 x 1520
Rectangular	2100 x 2100	⚠	N/A
	700 x 1000		720 x 1020
	700 x 1300		720 x 1320
	700 x 2500	⚠	720 x 2520
	800 x 1100		820 x 1120
	1000 x 1300		1020 x 1320
	1100 x 1600		1120 x 1620
	1100 x 2100	⚠	1120 x 2120
	1100 x 3100	⚠	N/A
	1600 x 3100	⚠	N/A



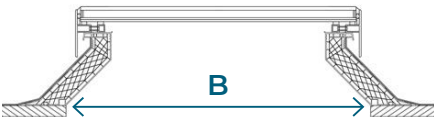
Skyseal Pro flat glass rooflights must be installed on a minimum 5–15° pitch

**uPVC 150mm
Vertical Upstand:**



Roof opening size

**uPVC 150mm
Splayed Upstand:**



Roof opening size

	To suit roof opening size (mm) (B)
Square	500 x 500
	600 x 600
	700 x 700
	800 x 800
	900 x 900
	1000 x 1000
	1200 x 1200
	1400 x 1400
Rectangular	600 x 900
	600 x 1200
	600 x 2400
	700 x 1000
	900 x 1200
	1000 x 1500
	1000 x 2000

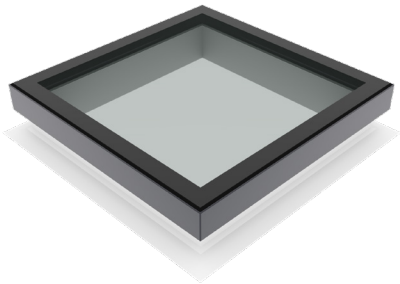
	To suit roof opening size (mm) (B)
Square	500 x 500
	600 x 600
	700 x 700
	800 x 800
	900 x 900
	1000 x 1000
	1200 x 1200
	1400 x 1400
Rectangular	600 x 900
	600 x 1200
	600 x 2400
	700 x 1000
	900 x 1200
	1000 x 1500
	1000 x 2000

Ventilation

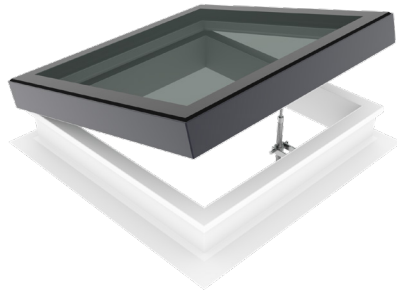


- Available as standard fixed unit
- Controllable trickle ventilation options available with uPVC curb
- Manually opening units incorporate winding spindle opening to approximately 200mm

Fixed:



Manual:



Manually opening units are ideal for use in refurbishment projects where getting power to the unit is not practical.



Skyseal Pro Electric opening with concealed motors:

Skyseal Pro electric opening units now feature concealed motors, offering a sleek and modern look.

- Thermally broken profile
- Motor fully concealed within subframe when closed
- All units have motor leads protruding minimum 2m
- Special motor bracket to em.glaze flat glass unit allows unit to be detached from inside in event of power failure
- Single or tandem motors depending on unit size
- Tandem units require no additional control panels, intelligent motors used that communicate with each other
- Water management channel within profile
- Motor mounted chain down as standard, minimising water/moisture entry into motors
- Unit fit to builders curb or uPVC curb
- Concealed hinge with no visible fixings internally or externally
- Wiring concealed inside em.glaze frame
- Standard RAL 7016 externally and White RAL 9016 internally

Accessories

Standard Comfort Controls:

- Electric opening switch supplied with retractive switch as standard
- Option of retractive switch or comfort kit including a control panel, remote control and rain sensor



Premium Comfort Controls:

- For electric opening
- Wireless controls which include open/close manual switch and internal and external temperature
- Wireless weather station which includes wind and rain sensor
- Option of handheld remote





"Once I researched Class 1 glass and non-fragility standards, I was adamant that I wanted a product that met this specification. Skyseal Pro ticked all the boxes – it not only looks great but offers the year round high-performance and reliability I wanted as it is thermally broken. The fast turnaround for the bespoke size I needed was advantageous – and to top it all off it was competitively priced. It's not often you feel like you can 'have your cake and eat it!'"