



TECHNICAL DATA SHEET | 01.11.21 | V 1.0

Offering a clean, minimalistic finish both inside and out, Skyseal Pro electric opening comes with concealed hinges and no visible fixings internally or externally.

## Technical Data

### Glazing:

- Double-glazed as standard – triple glazed by special order
- Standard double-glazed glass specification:
- 6mm Clear toughened outer
- 16mm Argon filled warm edge spacer silicone bonded
- 8.8mm laminated inner pane with PVB interlayer (11.5mm on larger units)
- Other glass specifications:
- Refer to glass specification and performance chart for information relating to other specifications

### Frame:

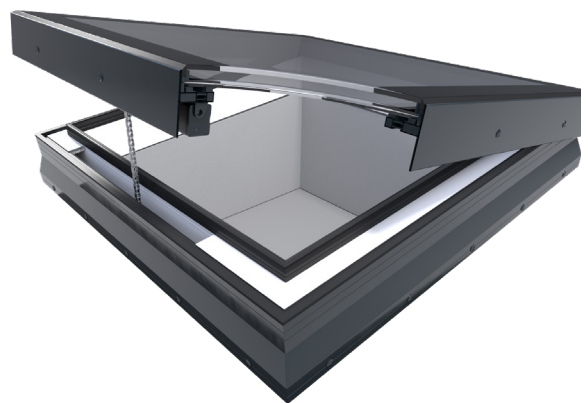
Rooflight frame is manufactured with fully thermally broken design and welded aluminium frame and cill detail. All visible aluminium is polyester powder coated.

### Performance – Rooflight:

Refer to glass specification and performance chart and data related to relevant unit size.

### Roof Pitch

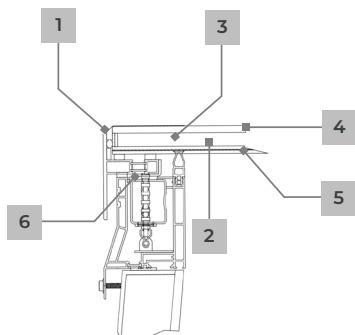
Recommended to be installed on roof slope 5-20°.



## Features & Benefits

- Thermally broken profile
- Motor fully concealed within subframe when closed
- All units have motor leads protruding minimum 2m
- Water management channel within profile
- Single or tandem motors depending on unit size
- Unit fit to builders curb or uPVC curb
- Wiring concealed inside frame
- Motor mounted chain down at standard, minimising water/moisture entry into motors
- Special motor bracket to flat glass unit allows unit to be detached from inside in event of power failure
- Standard RAL 7016 externally and White RAL 9016 internally
- 15 sizes available from stock for delivery within 5 days

## Product Diagram



1	Frame	Aluminium
2	Gas	Argon
3	Warm spacer	✓
4	Toughened outer pane	✓
5	Laminated inner pane	✓
6	Thermal break + box section	✓
Install pitch (upstand)		5–20° recommended
Standard frit width		84mm
External frame colour		RAL 7016 anthracite grey or any standard RAL colour
Ud-value *		1.23 W/m²K
Non-fragility		CWCT TN66/67 Class 1 (or 2 dependant on size)
Airtight BS6375-1:2015 and BS EN 12207		Class 2 300 Pa
Wind loads BS 6375-1:2015 and BS EN 12210		Class A3

\* complete glass unit tested vertically

## Testing & Certification

Requirement	Result	Classification
Air Tightness	Class 2 (300pa)	EN12207/ EN1026
Water Tightness	Pass (without penetration of water)	EN 1873
Impact Resistance	CWCT Class 1 (or 2 dependant on size)	–

## Rooflight Performance

Building Regulations (E&W) Approved Document L compliant design to achieve low U-Values:

- **Ud-Values:** As low as 1.23 W/m²K
- **G-Values:** As low as 0.36
- **Light Transmission:** Up to 80%

## Options & Accessories

### Standard comfort controls:

- Option of retractive switch or comfort kit including a control panel, remote control and rain sensor

### Premium comfort controls:

- Wireless controls which include open/close manual switch and internal and external temperature
- Wireless weather station which includes wind and rain sensor
- Option of handheld remote



## Guarantee

Skyseal product factories guarantee quality systems implementation process and environmental management systems.

## Cleaning & Maintenance

Any maintenance of rooflights must be carried out strictly in accordance with the relevant 'Health and Safety' regulations.

**Glazing:** Rooflights are 'Non-Fragile' but should not be trafficked. Wash and rinse glazing at intervals, to be determined by the owner. Use a solution of 5% mild soap or detergent cleaning solution sprayed on to wash the glazing surface. Follow immediately with clean water and promptly remove excess rinse water with a clean squeegee. DO NOT use abrasive cloth, sponges, cleaner or solvent acid-based solution on the glazing. Should stronger cleaning compounds be needed to remove stubborn stains, consult Roof Depot for recommendations.

**Electric motors:** Must be installed by a qualified electrician. Test annually by an Approved Electrical Installations Testing Company. Physically check fixing brackets to ensure fixings are secure.

## Note

We reserve the right to make technical changes. For more information on Skyseal Pro and other products, visit [www.roofdepot.co.uk](http://www.roofdepot.co.uk).

